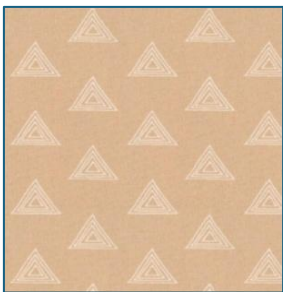


GloryQuilts Celebration Quilt

Fabric Selection

Use 100% cotton quilting fabric. All the fabrics should be solids or low-contrast single-color prints. The two dark fabrics should be similar in value (relative darkness). The medium fabric and the two coordinates should be similar in value. The two coordinates can be two fabrics, or you can use a variety of similar scraps, but they should all be "medium", like the main medium fabric.

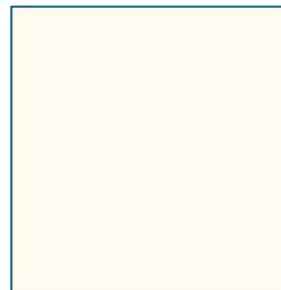
The dark and medium fabrics should all contrast well with the background fabric.



Medium

1 1/2 yd.

This one is used throughout the quilt top.



Background

4 yds.

A light color that contrasts well with all the other fabrics.



Dark #1

2 1/2 yd.*

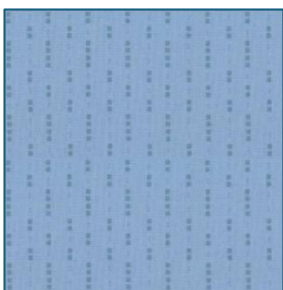
This one is used in the center of the quilt and around the edges, including the binding.



Dark #2

1 1/4 yd.

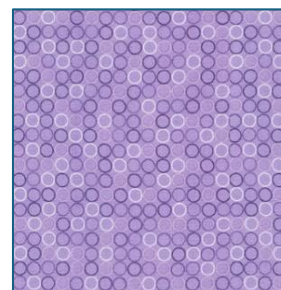
This one is used throughout the quilt top.



Coordinate #1

1 yd.

Medium in value, similar to the main medium fabric.



Coordinate #2

1 yd.

Medium in value, similar to the main medium fabric.

*If you are making the larger quilt with the optional border, purchase 3 1/4 yards of the Dark #1 fabric.